

Staff

The technical staff positions of the laboratories are listed as follows:

1. **Manager-Quality Control:** is responsible for the general operation of the Department and reports to the General Manager
2. **Coordinator-Regional:** is in charge of the Regional Office/laboratory, and reports to the Manager-Quality Control.
3. **Grading Officers:** are in charge of sampling and grading and inspection of vessels and containers. Also fumigation of export vessels and containers.
4. **Technical Assistants:** perform sampling and grading functions along with fumigation of containers and vessels.
5. **Research Assistants:** execute post harvest research and also function as Regional Co-ordinator.

Service of the Quality Control Department

- ❖ Grade and certify the grades of all rice intended for sale locally.
- ❖ Grade and certify all export quality rice and paddy countrywide.
- ❖ Train and licence graders in all rice growing regions to grade paddy and rice at licenced mills on behalf of the Board.
- ❖ Certify as fit all vessels (including containers) transporting export quality rice/paddy & by- products from Guyana.
- ❖ Fumigation service.
- ❖ This includes fumigation of all export vessels (including containers) transporting export quality rice/paddy and by- products. This service is also offered at mills upon request.
- ❖ Inspect and licence all rice factories (mills) annually.
- ❖ Ensure that all the regulations regarding the grading of paddy and rice countrywide are maintained.
- ❖ Prepare guide samples.



GUYANA RICE DEVELOPMENT BOARD



QUALITY CONTROL DEPARTMENT

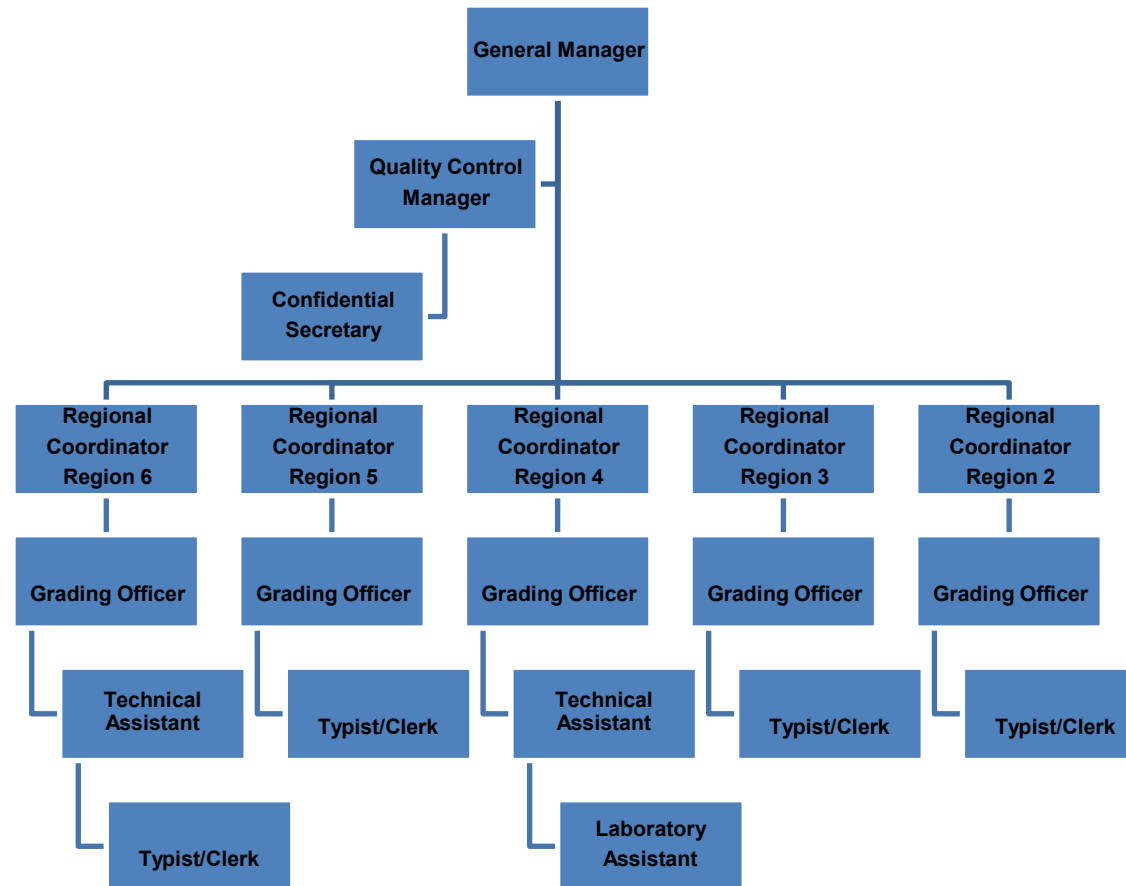
Quality Control Department

The GRDB is the institution responsible for the Grading and certification of paddy, rice and rice by-products intended for trade in and out of Guyana.

The quality Control Department carries out the statutory functions of the Board that relate to grading. These functions are as follows:

1. Grade and certify the grades of all paddy received into or proposed to be delivered to a rice factory for milling.
2. Grade and certify the grades of all rice intended for sale in Guyana.
3. Grade and certify the grades of all paddy and rice intended for export.
4. To collect and make available to the rice industry relevant data relating to grading of paddy and rice.
5. To train persons to grade paddy or rice or both and to certify and licence persons, who are in the opinion of the Board qualified to grade paddy or rice or both.

STRUCTURE OF THE QUALITY CONTROL DEPARTMENT



Quality Control Department Cont'd

6. Exercise and perform in relation to rice factories the functions, under the Factories Act, as defined in that Act.
7. To determine suitable types of packaging for sale in Guyana and for exportation of paddy and rice.
8. Lay down and maintain technical standards consistent with international classifications for grading paddy and rice

Facilities

Five regional quality control laboratories are operational at the regional office of GRDB. The Regional laboratories are located as follows:

- Anna Regina -Essequibo Coast, Reg. 2
- Crane-West Coast Demerara, Reg. 3
- Cowan Street-Georgetown, Region 4
- Burma-East Coast Demerara, Reg. 5
- Corriverton-East Berbice, Region 6