

FARMERS FIELD SCHOOL

The Farmers Field School was initiated during the Autumn Crop 2003. It is a grouped based system of learning and seek to empower farmers to make better decision in relation to the management of their crop. It encouraged participation and is seen as an effective tool in bridging the yield gap. It brings farmers from diverse backgrounds and performance level together, who are able to share their knowledge and experiences thereby motivating each other to improve their practices.

FFS are conducted for the duration of a cropping season and can have between 12 to 14 sessions per season.

FFS has evolved from group meetings to a more comprehensive programme of on - farm demonstrations, involving farmer's participation at all levels of the programme. This method of participation and learning by doing has proven to be very beneficial as farmers are in a better position to retain and practice what they have learned.

OBJECTIVE

The goal of the F.F.S is to ensure that farmers achieve maximum yield from their crop by using agro ecosystem analysis as a basis for action.

CHARACTERISTICS OF FARMERS FIELD SCHOOL (F.F.S)

The F.F.S is conducted using comparative demonstrations to illustrate or validate a technology. Farmers meet on a weekly basis at the plot where data are collected and observations made.

Decisions with regard to the management of the crop are taken based on the data collected and the general observations of the farmers. The decision is agreed upon by all and it is carried out by the collaborating farmer.

A special topic is discussed and this is related to the growth stage of the crop. Group dynamics or fun activity is also part of a given session.

Guyana Rice Development Board



WORK OF THE EXTENSION DEPARTMENT

“We help Farmers to help themselves.”

Rice – The Grain of Life



MISSION OF EXTENSION SERVICE

To build partnerships and provide research-based information through non-formal education to farmers thereby helping them to develop their problem solving and decision making capacity to improve their economic well-being and quality of life.

FUNCTION OF GRDB-EXTENSION

To establish facilities for the conduct of research and to conduct research relating to rice and extend to farmers through an established system the benefits derived from such research.

OBJECTIVE OF EXTENSION:

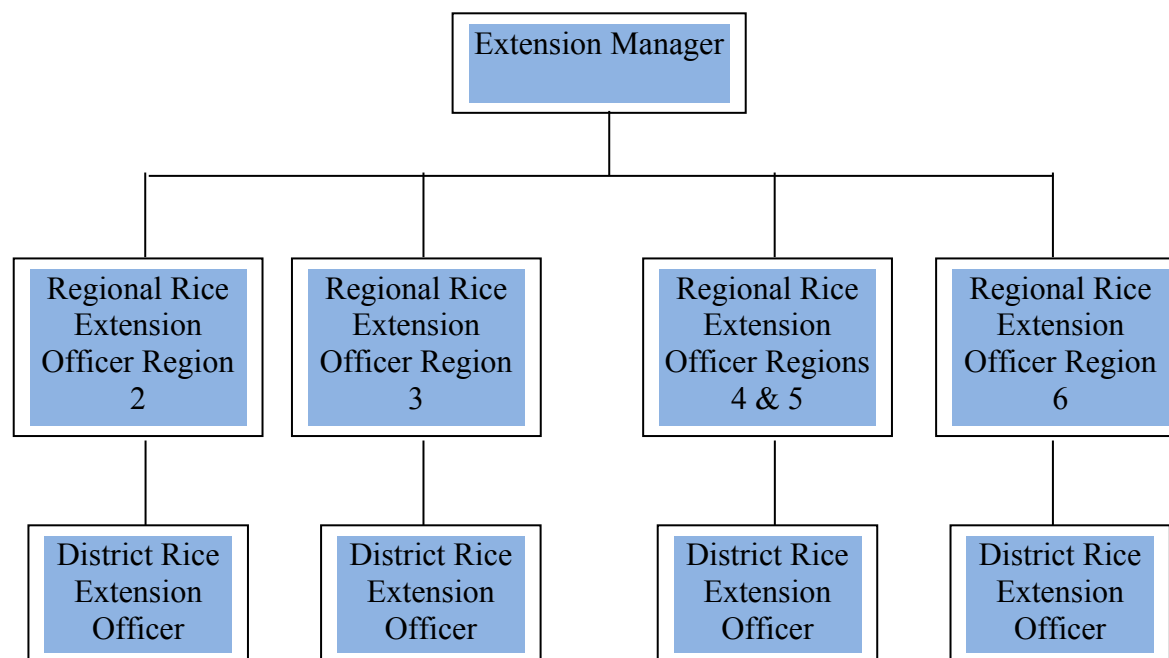
Promote conditions for access and transfer of improved rice varieties and crop management practices that will enable farmers to produce high and stable yields of rice.

ROLE OF EXTENSION.

Extension service is focused in four themes, viz:-

- ❖ Seed production & marketing.
- ❖ Technology application.
- ❖ Data collection.
- ❖ Special activities

STRUCTURE OF THE EXTENSION DEPARTMENT



There are thirty four (34) extension officers distributed over five (5) rice growing regions. One officer in each Region performs the role as the supervisor and is called the Regional Rice Extension Officer (RREO). The others are called District Rice Extension Officer (DREO). See names of Extension Officers below.

Region 2, Contact# 771-4158

Deoram Prahlad, Davendra Singh (GRDB)
Tamesh Ramnauth, Nimron Bahadur (GRDB)
Sophia Boston (GRDB)
Gayadhil Ramnauth, Subdoh Kishore (RPA)
Showkat Ali (RPA)

Region 4&5, Contact# 232-1303

Bissessar Persaud (GRDB)
Satish Sookram, Rishal Ramsaran (GRDB)
Quacie Wilson, Alan Basil (GRDB)
Toetaram Ganesh, Delon McKenzie (GRDB)
Sagar Bhajan, Gewanram Khaderu (RPA)
Kevil Chester (PSM)

Region 3, Contact# 254-0355

Pooran Seeraj, Deodram Garbaran (GRDB)
Zakir Khan, H. P. Sharma (RPA)
Ramsaran (RPA)
Premraj Persaud (PSM)

Region 6, Contact# 335-3318

Dhasrat Naraine (GRDB)
Philip Jainarine, M. Harvey (GRDB)
P. Ramchaitar, Nigel Jainarine (GRDB)
Kelvin Chinapa (GRDB),
R. Singh, D. Oudraj (RPA)
S. Nagessar, S. Fraser (RPA)

CURRENT EXTENSION WORK

The extension work at present is centered on activities such as the distribution of seed padi, collection of field data, field inspection, field demonstration, monitoring of on-farm trials and giving general advice to farmers.

EXTENSION METHODOLOGY

The Extension Department uses the following approaches to interact with farmers and also impart information to them.

-Fliers, leaflets, brochures.

-Seminars, workshop, group meetings.

-Field visits.

-Field Demonstrations
(Result, method)

-Print and electronic media.

-Farmer Field School